

# User Manual

## Abrahami Drill Guide

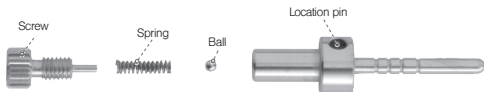


## Overview

The Abrahami Drill Guide Kit is a tool designed to ensure simple and effortless spacing and parallelism between consecutive implants.



### Location Pins Assembly



Prior to cleaning, the location pins must be separated as follows: screws, springs, balls and pins. Cleaning and drying the parts is essential in order to avoid erosion of the parts and to maintain efficient functioning of the system.

## Product details by number:

### 1 Location Pins Ø2mm

The location pins are used as a reference point for the first osteotomy. The four pins are either 2 mm or 2.8 mm in diameter, and either 10mm or 16mm in height.



Short and thin: 10mm length,  
2mm diameter



Long and thin: 16mm length,  
2mm diameter

### 2 Extension Arms

The three extension arms allow adjustments of the distance to the next implant, in increments of 1mm. The distal block allows drilling at the desired position.



6, 7, 8mm



9, 10, 11mm



12, 13, 14mm

### 3 Pilot Drills (not included)

The distal block of each extension arm (B) allows drilling using 2mm to 2.8mm pilot drills.

### 4 Paralleling Pin 20mm

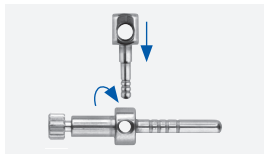
Three, dual - sided parallel pins (2mm and 2.8mm) are used to mark the position of previously drilled sites.



## Step By Step



Identify the location of the first implant, and create an osteotomy of full length using a 2mm or 2.8mm drill.



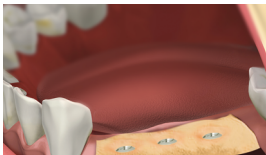
Based on the surgical plan, choose an extension arm and secure it to a location pin at the desired distance.



Based on the surgical plan, place the location pin into the existing osteotomy, and adjust the extension arm parallel to the long axis of the location pin.



Using a 2mm or 2.8mm drill, create the next osteotomy.



Enlarge each osteotomy to the desired diameter, based on the chosen implant for each site. Use parallel pins to ensure parallelism between implants.

## INSTRUMENT MAINTENANCE

### New Product

- The device is non-sterile.
- Cleaning and sterilization are required prior to first use.

### Cleaning and Disinfection:

- Clean instrument with running water to remove any blood or tissue immediately after use.
- Immerse instrument in an approved cleaning/disinfecting solution.
- Use of an ultrasonic cleaner is highly recommended.
- DO NOT USE agents containing high concentration of chlorine or agents containing oxalic acid.

- Use distilled water to prevent water stains.

### Sterilization

- All dental instruments must be sterilized prior to each use.
- Recommended autoclave sterilization protocol: temperature of 134°C (273°F), for 6 minutes.
- Do not exceed 134°C.

### Maintenance

- Perform a visual and functional inspection of the instrument prior to sterilization. Especially look for: damage to

instrument, corrosion, debris or stains and ensure that all moving components are working properly.

- Dispose of damaged instruments.

### Key to codes used



Attention, see instructions for use



Batch Code



Manufacturer



Catalog Number



MIS Implants Technologies Ltd.  
P.O.Box 7, Bar Lev Industrial Park 2015600, ISRAEL  
Website: [www.mis-implants.com](http://www.mis-implants.com)

**mis<sup>®</sup>**



MIS Implants Technologies GmbH  
Simeonscarre 2, 32423 Minden, Germany  
Tel: +49 571-972-7620  
Email: [service@mis-implants.de](mailto:service@mis-implants.de)